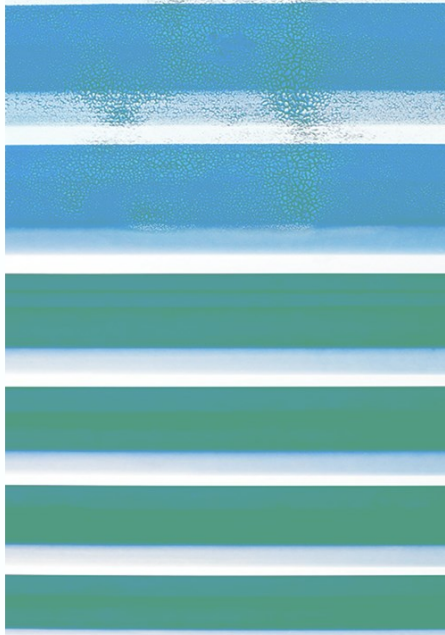


A CENTRAL NEWS SPECIAL



www.centralba.org.uk



One of the things that the Association Council has been working hard on is the release of finance for the work of mission among the churches. We are very pleased with the number of beneficiaries of grants over this last year, touching in differing ways over 35 churches. From those who have caught hold of the DREAM (from dream grants), to training through Footsteps, to helping with buildings and loans and, of course, not forgetting those churches and ministries supported by Home Mission. We have attempted in this little booklet to give you a glimpse into the breadth of the mission that is being enabled. We are grateful to the many churches that continue to support Home Mission, particularly in these challenging times, but also appreciative of the opportunity we have to reinvest resources from regular income and reserves including receipts from closed churches back into the mission field that is the CBA.

Please do use this booklet not simply for information but also as a resource for prayer, and also perhaps to signpost those who ask where all the money goes.

Geoff Colmer



Jenni Lee

Hackleton Baptist Church

“Saying “thank you” for Home Mission support seems inadequate. We give thanks both to God and to you, His faithful givers, for supporting small village churches like ours. Without Home Mission I would not be able to pastor the amazing people in Hackleton Church.

Despite going through some difficult times in the last two years, we have a deeper love for one another and a renewed vision for reaching our village community. People have joined us over the last eighteen months and whilst our new plans cannot be implemented immediately due to Covid19, we are making unexpected re-connections in lockdown.” **Jenni**



Liz Hughes

Luton Airport Chaplain

As a team we have engaged in conversations with over 3,422 passengers and 2,523 staff. Some of these conversations will have been brief questions about how to find a gate, toilets or a particular shop, but many are more significant. We are recognised by staff from all different agencies who work at the airport as the ‘go-to team’ who will respond quickly and effectively with any number of personal calamities. Because we are not so tied up with operations we can give valuable time to the lost, frightened, abandoned and hopeless.



Adrian Wood

London Colney Baptist Church

“The church has been immensely appreciative of Home Mission Grants for a number of years. Below is a list of ways HM has enabled us to be church in the community...

Churches Together Food Bank, Free Solicitor’s Advice Surgery, Toddler’s Group, Weekly presence in local primary school listening to children read, taking assemblies and RE classes, Chaplain to STEP Schools Work , Day Chaplain at St Albans Cathedral, working with Parish Council in different projects, Pastoral Care in the community, meeting people who are housebound.

A big thank you to everyone who gives to HM, it makes a huge difference.” **Adrian**



HOME MISSION



Mary Moody

Bovingdon Baptist, Herts

“The church is characterised by love towards God, each other and those outside the church family. Our prayer/mission focus is well-being, with social activities like 'Walk, Talk & Coffee' and table tennis club organised for the benefit of all-comers. Quiz Night included teams of hall-users alongside church family and friends, and raised funds for our annual 'Live Nativity' which brings the gospel story (with real animals!) to the heart of the village Christmas Fayre.

Before 'lockdown' we had Toddlers, Housegroup, Coffee Morning, Youth Group. Currently confined to our homes, we continue to 'walk together' on a prayerful well-being journey, looking for creative ways to show God's love to our neighbours.” **Mary**



Steve Pearman

Highfield Community Church, Rushden

Steve has been in ministry at Highfield for many years and is known by the community. He comments “Highfield looks to bring people together and to Jesus. We do that through our Sunday service, coffee shop and especially Messy church. Here families from our street and nearby do craft, play games, eat and get challenged spiritually. We want to thank Home Mission for assisting and encouraging us to point people to Jesus.”



Alistair Jones

Broughton Baptist

“The development of our Church Fellowship over the past years has been from pastoral vacancy to Ministers-in-Training to vacancy again, and now to a full-time Minister, has only been made possible by our faith in Almighty God, His leading and guiding, the prayer support of many people and particularly the financial support provided by Home Mission. To have a full-time Minister is both a blessing and responsibility for any congregation. At Broughton we feel grateful and thankful to all the congregations who financially support Home Mission, which has enabled us to move forward.”

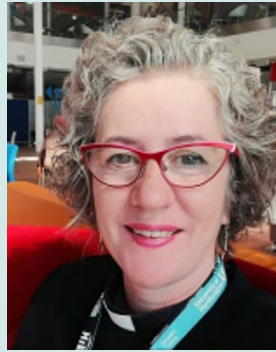
Roger Brewster, (Deacon)



Mike Yates

Sandy Baptist Church

“The communication of the Gospel is one of the most important aspects of church life we can have. Having settled in at Sandy Baptist Church, we now look forward to developing and maintaining relationships within the wider community. We are ready to forge ahead in our witness to them through our faith in action, reaching out to the young and more mature alike. The grant allows me as pastor, to work within the church context to effectively communicate the Gospel to those that attend church on a Sunday morning, but also to the wider community that hire our facilities. Without the grant this would be impossible, and for that we thank you.
“Mike



Fiona Souter

University of Hertfordshire

Pastoral work with students and staff is a major part of the chaplaincy role at Hertfordshire. The student body includes about 2,000 international students and a significant number of students who are first generation entrants into University from their families. Fiona expresses her vision for chaplaincy in terms of being a person of faith who is there to influence the younger generation who are, and will be, members of society today and tomorrow. Helping to shape the young is a delicate, demanding and important ministry, to which Fiona is clearly committed and at which she is working hard, and getting results as people engage with her as a Christian minister in a secular context.



David Wheatley

Kings Community Church, Letchworth

“We would like to give our thanks to the Home Mission Fund and to all the churches who support it. Without your assistance we could not have been able to extend the love and grace of our Lord.

King’s Community Church is about reaching out into the community where God has placed us, using various avenues such as Tots groups, Children and Youth groups, Kings Kitchen meals, and the Fathers Storehouse meeting the needs of those in our area who are in need. Due to the Covid Virus we are running a food hub three days a week serving at least one hundred families. We are looking forward continuing our connections with those we have reached once the crisis is over and see them added to God’s family.” **David**



HOME MISSION

We also support ...





OTHER GRANTS

Other than Home Mission grants, the Association has set aside an annual budget for four other types of grant



Mission & Evangelism

Do you have a vision to relate more closely to your local neighbourhood, providing an activity with a social or communal benefit? Do you have an idea for an evangelistic initiative? Looking to promote the gospel outside the church fellowship?



Repair & Maintenance

Available to any church in membership with the CBA. Churches with an income of over £20,000 per annum will be required to evidence match funding of the amount requested to support the costs of repair and maintenance



Training

Develop the giftings of your church members Enhance their skills & opportunities to benefit them and your church. The maximum grant available is £200, and this should not exceed 1/3rd of the total cost of the training.



Dream

CBA council would like to invest £40,000 in mission over the next 12 months. Do you have a God inspired 'dream' that we can help you realise?

For further information please go to the web site centralba.org.uk/grants for a booklet + application forms. The rest of this leaflet indicates where this past year's grant money has been awarded.

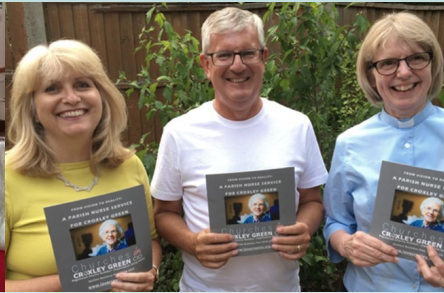


DREAM GRANTS



Haddenham Messy Vintage

Messy Vintage as a concept has evolved from Messy Church. It holds the same values and good practice for older people. The number of guests attending Vintage Church in Haddenham has been slowly increasing, the last event in March, welcomed 12 guests and 7 helpers. The monthly sessions consist of many different activities, readings, discussion, experiments, tea and cake, all based around the theme of the day. The last Vintage Church focused on 'Climate Change'. A grant of £2000 was given towards helping with this exciting project.



Croxley Green Parish Nurse

Cathy works one day per week as a Parish Nurse in Croxley Green. She comments "The beauty of Parish Nursing is that it truly is whole person care, taking into consideration the physical, psychological and spiritual needs of individuals. Parish Nurses are uniquely placed to be able to attend to the wellbeing of the 'whole person'".

Now with the help of a Dream Grant from the CBA, the trustees are looking to employ a second nurse who is a Mental Health specialist to work with Cathy and support her in her role. It seems that this is where the NHS is really struggling and, as Cathy's work has highlighted, there are many folk who just fall through the net.



Biggleswade Kings Corner

Biggleswade BC sensed a call from God to "pioneer a Renew space on the new Kings Reach housing estate, a development of 2000 homes and growing. They received a DREAM grant of £3000 to help with the lease of an office/retail unit. "We have increasingly encountered people feeling isolated on the estate and felt God telling us to get involved, to provide a space where anyone could come and feel safe, to chat, to receive unconditional love, and to be signposted to relevant agencies and groups. King's Corner is our response to that call" says **Martin Ceaser** (Pastor).



PIONEERING & PLANTING

WHITEHOUSE Church



One of the Dream Grants we have given is 5000 to help with start up costs for a new church plant into a new estate called Whitehouse which is to the West of Milton Keynes. The adventure is being spearheaded by Tony McGinley together with his wife Sarah (and now daughter Lydia), and a group of about 16 who also sensed a call to commit to the project. Tony was the youth worker at Loughton

Baptist Church and it is because of this church's vision and willingness to financially support, that this new church plant has been made possible. Tony and Sarah moved on to the estate at an early stage of development and together with the team began to sense a call to plant a church. Thus it was that at the beginning of this year the church went 'live', meeting in the local school where they are forming a strong relationship, and in the early weeks enjoying seeing a number of new people from the estate starting to get involved. Then along came Covid-19! Tony was asked how things are going.

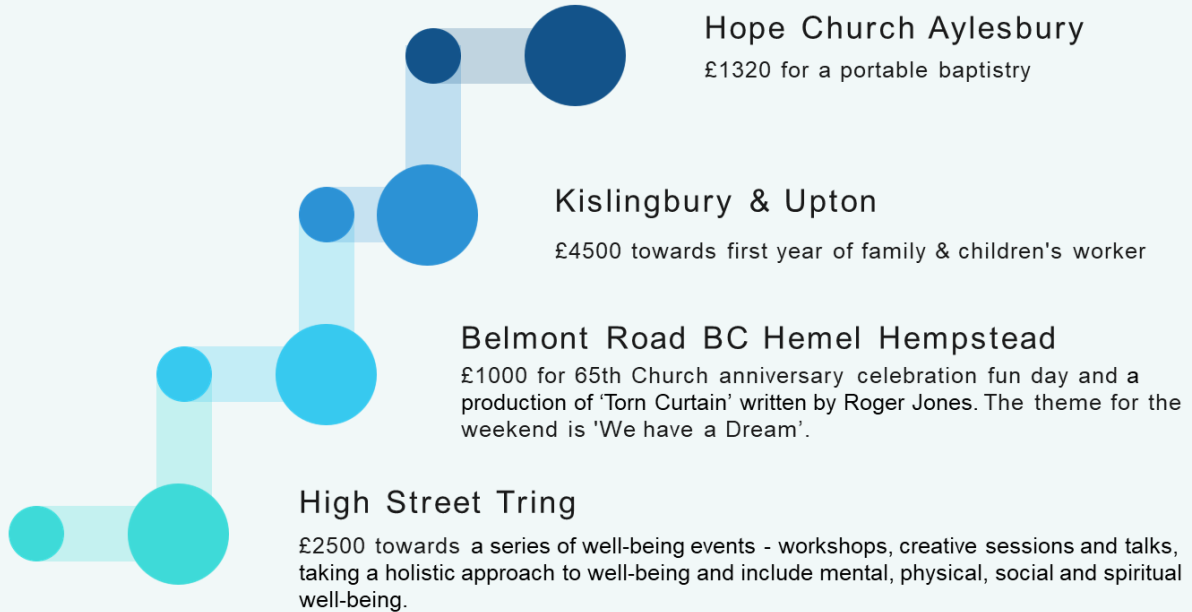
"The launch of Whitehouse Church has brought great encouragement and challenge in equal measure. We had such a clear call to this estate and through most recent times we are discovering more and more of who God has called us to be. We have now been a virtual church for longer than we were a physical one and are busy serving this community in anyway we can."



Tony McGinley



other initiatives supported





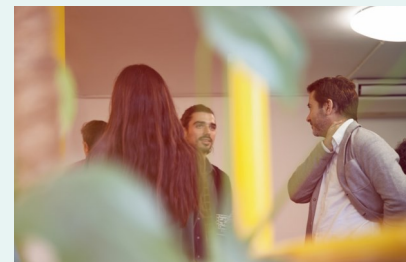
Great Ashby

A £1,000 grant was given towards a **Love Stevenage Day**. "In all eight churches came together for the event. There were sensory activities and games, with Herts Disability Sports teaching archery. Bible drama with sign language interpretation and a range of related crafts were organised. A grant allowed the event to offer soft play and three bouncy castles, two of which were set aside as quiet bouncy castles for single family use, allowing children with physical or sensory needs to have a safe space to bounce. A disco dome was turned into a chill out space for children who needed somewhere calm to relax. And of course, there was lots and lots of cake!" **Laura Gimeno** (Pastor)



High Street Tring

With the £500 grant we purchased display boards, leaflet stands, magazine rack, promotional material, and hoodies, as shown in the images. The tidy and welcoming foyer is now a great space to gather information, easily find out what's happening at High Street, and indicate how to find out more, if needed, with our welcome leaflets. The second display board is useful for changing events, for example a display at the recent town Climate Event (pictured above). The team hoodies help the midweek children's team to be easily identified as they move about the busy morning activity sessions. They are also handy when we do events within the community.

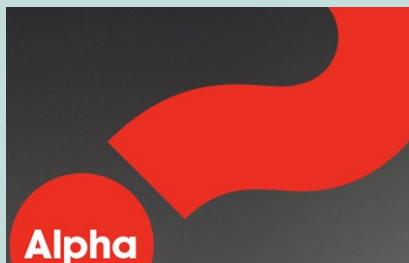


Abbey Centre

A £500 Grant was made for Network Lunches for the Community. "For the last two years the Abbey Centre in Northampton has been hosting a monthly community lunch for groups across the south Northampton area to come together, explore what each one is doing and network for the purposes of greater collaboration. The grant we received has been used to provide a simple lunch for which we make no charge but ask for donations only. We regularly have a member of the police force and representatives from the local parish councils in attendance."

David Warrington (Pastor)





St Andrews Bletchley

"We are extremely grateful for the grant from CBA.

We embarked on an Alpha course and with funds this helped us provide desserts as well as access to the materials including Alpha guides and team leader guides for all those attending. From teenagers to mature adults we had a real diversity of people attending. Conversations around baptism developed and we extended the course to have a further six sessions. This resulted in nine people going through the waters of baptism.

Grant funding was also given to assist with a new mission young people initiative group called BUGZ. (Building Up God's Zone) BUGZ is a group for children age 6-11. Weekly sessions with scripture theme providing opportunities for play to have fun in a relaxed environment."

Donna Harris (Church Secretary)



Markyate

"The £1000 grant enabled two new ventures. Who Let The Dads Out? runs monthly on a Saturday morning (or it did), and provides a space for dads to bring their children for an activities morning which includes unlimited breakfast. It's proving very popular and has been well attended by local people in Markyate, the vast majority from an unchurched background.

The Forget-Me-Not centre is aimed at reaching out to the isolated, lonely, and those with memory issues (and their carers). So far we have only run a couple of practice sessions which were not well attended, probably because we were too specific in who we were trying to reach. We have purchased equipment aimed at making our church hall more comfortable for those attending and plan to revisit this ministry in a modified format after the lockdown.

Thank you so much for your support in these ventures." **Phillip Coffin** (Pastor)

Contact us

Speak to one of the team on:

0345 070 2223

8am – 6pm Monday to Friday

✉ enquiries@baptist-ins.com



Home insurance

£100 for a Baptist church with every new home insurance policy

(Terms and conditions apply)



BaptistInsurance



Little Kimble

"Having been fundraising for a number of years it was suggested that we approach the CBA and request a small grant towards the costs. Thankfully this was approved and helped considerably, as extra costs were incurred. Now with a fully insulated extension housing a large kitchen, disabled and standard toilets and storage we can look to its future use. Plans include further coffee mornings, pop-up tea shops as well as the possibility of lunches to serve the community around about. The improved facilities also allows us to offer them to other local groups." **Steve Dear**



London Colney

"Five years ago LCBC needed to have the flat roof at the front of the church relaid. It hadn't been done since the church was built in 1960. We contracted a company who did this but three years after the work we were experiencing further leaks when it rained heavily. We contacted another company to undertake the work and the quote was for £1400, which is a lot of a small Home Mission church. We then enquired with the CBA about a possible grant and to our delight were given £1000 towards the cost. The Church roof is now fully fixed and the buckets have been put away again!" **Adrian Wood** (Pastor)



Gretton

Much work was needed on the chapel in Gretton so we have divided it up into four phases. The first of these is the most expensive and caused the most upheaval. It involved replacing the oil heating, which no longer worked, with underfloor air source heating, as well removing all damp, redecorating the sanctuary and demolishing the old vestry and boiler rooms which were collapsing, and building a new room on the same specifications. The cost of this was £170000 which was raised with the help of a £15000 grant from the CBA. **Peter Lloyd** (Pastor)





PIONEERING / CHURCH PLANTING



David Skinner, minister of Houghton Regis BC, reflects that establishing a church on the large 10000 home new development

going on near the church has been an important idea for more than fifteen years and part of prayerful discussion for at least eight. There have also been conversations with the local authority for the last seven years. So this has been a long term project! Much of the infrastructure has now been built and people began to move into the first new homes before Christmas 2019. Over the next 15 years the population will more than double.

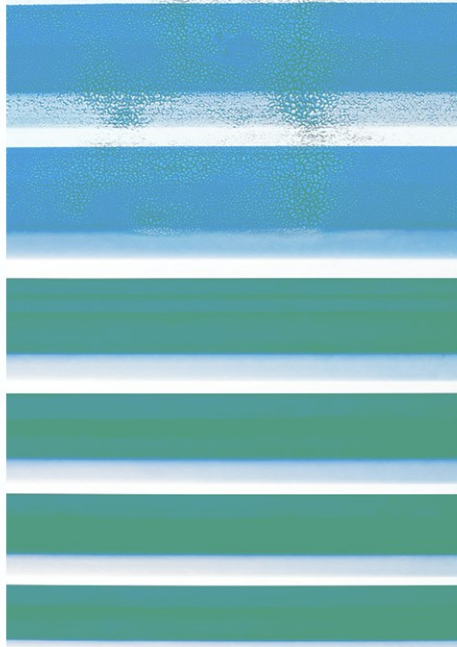
The dream of David and group of local churches involving several denominations is that they will be able to call a pioneer community worker to live and reach out to the new development that is being constructed, beginning with a focus on what is called Bidwell West. The bigger dream is that alongside engaging a pioneer worker a significant multi-purpose community centre building will emerge. It will be



designed to be an open, welcoming and inclusive facility, available for local groups of all kinds, including in time, a home for a worshipping Christian community.

The first step is to be able to employ a pioneer worker, and in the current Covid-19 situation it is proving hard to join up all the financial dots. The Association is committed to the venture through Home Mission and other support, so please continue to pray as the venture unfolds.

A CENTRAL NEWS SPECIAL



Thank you for your continued support in these challenging times



www.centralba.org.uk

Produced by Colin Pye: revcolinpye@gmail.com